

A close-up, front-facing view of Darth Vader's helmeted head and shoulders. He is wearing his iconic black armor and cape. The lighting is dramatic, highlighting the metallic textures of his helmet and the folds of his cape. The background is dark, making the character stand out.

STAR WARS

A Space Western

Decorative wavy lines in red, orange, and blue colors at the bottom of the image.

SPACE OPERA OR SPACE WESTERN

- Sci-Fi that emphasizes romantic adventure, exotic settings, and larger than life characters
- Coined in the 1930s, the term is a play on the “soap” opera, which itself grew out of silent era “horse” operas—formulaic westerns
- Space Operas/Space Westerns incorporate the features of both soap operas and traditional westerns
 - Pastiche: A work of art that imitates the style or character of the work of one or more other artists
- Examples
 - *Flash Gordon, Star Trek, Firefly, Guardians of the Galaxy*

PLOT

1. Multiple Storylines
 - a. Family “Complications”
 - b. Forbidden Love
 - c. Good vs. Evil “Mission”
2. Large Stakes
3. Betrayal
 - Within Family or Friends
4. Fights
 - Six-Shooters, Swords, Fists
5. Chases
 - Fast Horses
6. Serialized Potential
 - A Saga



SETTING

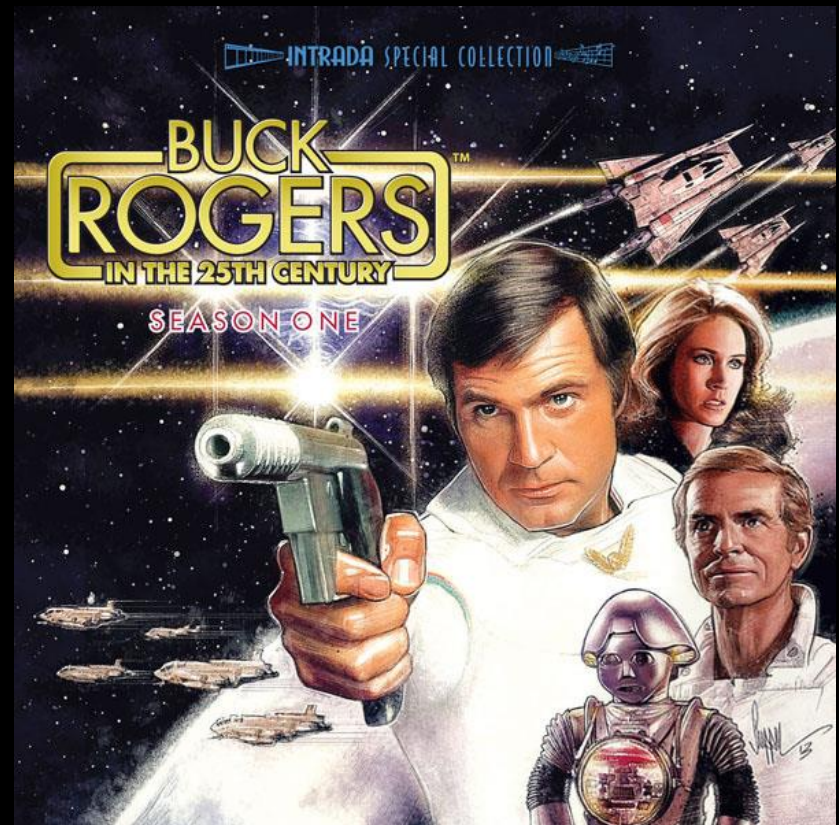
Multiple Location

1. Epic
2. Exotic
3. Frontier-like
4. Bars/Saloons/Cantinas



CHARACTER

1. Heroic Ideal
 - Pure and Noble
2. “Outlaw” Cowboy
3. “Princess”
4. Sidekick(s)
 - Often for Comic Relief
5. Villain We Love to Hate
 - Over-the-top



STONE

1. Melodramatic
 - Dialogue
 - Situations
2. Romanticized
 - Optimistic
 - Clear Good and Evil
3. Conquest and Rebellion
 - Caste System
 - Lawlessness



A classic Star Wars movie poster featuring Luke Skywalker, Han Solo, Princess Leia, Ben Kenobi, Chewbacca, R2-D2, and Darth Vader. The background shows a planet, a starship, and a space battle.

- Primary Cast

- Luke Skywalker
- Han Solo
- Princess Leia
- Ben “Obi-Wan” Kenobi
- C-3PO and R2-D2
- Chewbacca
- Darth Vader

STAR WARS